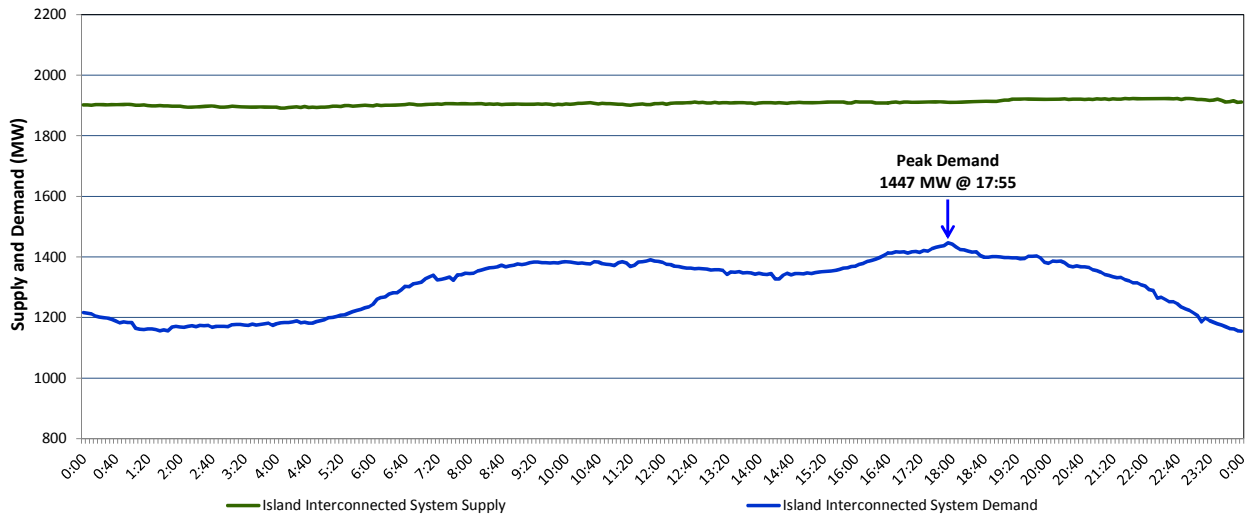


**Newfoundland Labrador Hydro (NLH)
Supply and Demand Status Report Filed Thursday, February 16, 2017**

**Section 1
Island Interconnected System Supply and Demand
Actual 24 Hour System Performance For Wednesday, February 15, 2017**



Supply Notes For February 15, 2017

- A** As of 1556 hours, January 20, 2017, Holyrood Unit 2 available at 150 MW (170 MW).
- B** As of 1425 hours, February 06, 2017, Hardwoods Gas Turbine unavailable (50 MW).
- C** As of 2006 hours, February 06, 2017, Holyrood Unit 1 available at 150 MW (170 MW).
- D** As of 1513 hours, February 09, 2017, Stephenville Gas Turbine available at 38 MW (50 MW).

**Section 2
Island Interconnected Supply and Demand**

Thu, Feb 16, 2017	Island System Outlook ³	Seven-Day Forecast	Temperature (°C)		Island System Daily Peak Demand (MW)	
			Morning	Evening	Forecast	Adjusted ⁷
Available Island System Supply: ⁵	1,890 MW	Thursday, February 16, 2017	-3	2	1,390	1,283
NLH Generation: ⁴	1,590 MW	Friday, February 17, 2017	-1	-1	1,405	1,298
NLH Power Purchases: ⁶	110 MW	Saturday, February 18, 2017	-2	-3	1,425	1,317
Other Island Generation:	190 MW	Sunday, February 19, 2017	-3	-2	1,340	1,233
Current St. John's Temperature:	-3 °C	Monday, February 20, 2017	-2	-2	1,380	1,273
Current St. John's Windchill:	-8 °C	Tuesday, February 21, 2017	-3	-4	1,515	1,406
7-Day Island Peak Demand Forecast:	1,515 MW	Wednesday, February 22, 2017	0	-2	1,450	1,342

Supply Notes For February 16, 2017

- Notes:
1. Generation outages for running and corrective maintenance are included. These are not unusual for power system operations. They generally do not impact customer supply. The power system operators schedule outages to system equipment whenever possible to coincide with periods when customer demands are low and sufficient supply reserves are available. However, from time to time equipment outages are necessary and reserves may be impacted.
 2. Due to the Island Interconnected System being isolated from the larger North American grid, when there is a sudden loss of large generating units some customer's load must be interrupted for short periods to bring generation output equal to customer demand. This automatic action of power system protection, referred to as under frequency load shedding, is necessary to ensure the integrity and reliability of system equipment. Under frequency events typically occur 5 to 8 times per year on the Island Interconnected System and the resultant customer load interruptions are generally less than 30 minutes.
 3. As of 0800 Hours.
 4. Gross output including station service at Holyrood (24.5 MW) and improved NLH hydraulic output due to water levels (35 MW).
 5. Gross output from all Island sources (including Note 4).
 6. NLH Power Purchases include: CBPP Co-Gen, Nalcor Exploits, Rattle Brook, Star Lake, Vale capacity assistance (when applicable), and Wind Generation.
 7. Adjusted for CBP&P, Praxair and Vale interruptible load as well as the impact of voltage reduction, when applicable.

**Section 3
Island Peak Demand Information
Previous Day Actual Peak and Current Day Forecast Peak**

Wed, Feb 15, 2017	Actual Island Peak Demand ⁸	17:55	1,447 MW
Thu, Feb 16, 2017	Forecast Island Peak Demand		1,390 MW

- Notes: 8. Island Demand is supplied by NLH generation and purchases, plus generation owned and operated by Newfoundland Power and Corner Brook Pulp & Paper (Deer Lake Power, DLP).